

DIN 3021 Spring Band Clamp

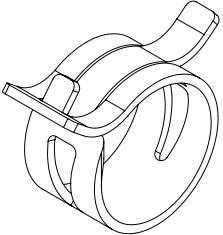


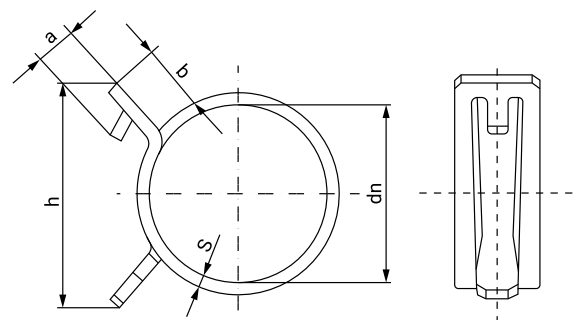
This heavy-duty spring-band clamp is manufactured according to DIN 3021.

It is especially recommended for applications where temperature can vary from -40 °C to +120 °C.

The design of this clamp means that thanks to the elasticity of the material used in its manufacture, it maintains the same radial force despite changes in temperature. It is fast and easy to mount and is also reusable.

Application Ø			Part Number	Width	h	b	S ±0,4	a max	Opening force N	Box Quantity	Outer Box Quantity
Ø Nominal dn	Ø Open	Ø Closed									
13	14,2	12,0	3031766	12,0	40	10	0,8	9	100	200	1.600
14	15,8	13,3	3031834	12,0	40	10	0,8	9	100	200	1.950
15	16,5	13,9	3031777	12,0	40	10	0,8	9	130	200	1.600
16	17,5	14,9	3031802	12,0	40	10	0,8	9	160	200	1.600
17	18,5	15,6	3031501	12,0	40	10	0,8	9	160	200	1.600
18	19,0	16,0	3031812	12,0	40	10	0,8	9	200	200	1.600
19	20,2	17,8	3031510	12,0	40	10	1,3	9	300	200	800
20	21,6	18,4	3031528	12,0	40	10	1,3	9	200	200	1.600
21	22,5	19,4	3031536	12,0	40	10	1,3	9	200	200	800
22	24,2	20,5	3031538	12,0	40	10	1,3	9	200	200	800
23	24,7	21,0	3031545	12,0	40	10	1,3	9	230	200	800
24	26,0	22,0	3031552	12,0	40	10	1,3	9	230	200	800
25	26,8	23,5	3031560	12,0	40	10	1,3	9	260	200	800
26	28,0	24,3	3031579	12,0	60	10	1,7	9	270	200	800
27	29,2	25,2	3031587	12,0	60	10	1,7	9	280	200	800
28	30,2	26,1	3031593	12,0	60	10	1,7	9	300	100	400
29	31,5	27,0	3031595	12,0	60	10	1,7	9	300	100	800

	TECHNICAL INFORMATION	
	MATERIAL	STEEL 51 CrV4
	FINISH	MULTILAYER, CHROME (VI)-FREE BASE COAT: ZINC TOP COAT: ORGANIC BLACK COLOR
	CORROSION RESISTANCE	720 HOURS SALT SPRAY (ASTM B-117)



DIN 3021 Spring Band Clamp



This heavy-duty spring-band clamp is manufactured according to DIN 3021.

It is especially recommended for applications where temperature can vary from -40 °C to +120 °C.

The design of this clamp means that thanks to the elasticity of the material used in its manufacture, it maintains the same radial force despite changes in temperature. It is fast and easy to mount and is also reusable.

Application Ø			Part Number	Width	h	b	S ±0,4	a max	Opening force N	Box Quantity	Outer Box Quantity
Ø Nominal dn	Ø Open	Ø Closed									
30	32,5	28,0	3031823	12,0	60	10	1,7	9	300	100	800
32	34,5	29,3	3031616	12,0	60	10	1,7	9	300	200	200
34	36,4	30,6	3031620	12,0	60	10	1,7	9	300	200	200
35	38,0	31,5	3031624	12,0	60	10	1,7	9	300	200	800
36	39,0	32,5	3031632	12,0	60	10	1,7	9	300	200	1.600
38	41,5	34,5	3031640	12,0	60	10	1,7	9	300	200	1.600
40	42,5	35,5	3031667	12,0	60	10	1,7	9	300	200	200
41	43,5	35,3	3031669	12,0	60	10	2,1	9	370	200	800
42	44,5	37,2	3031675	12,0	60	10	2,1	9	340	100	400
44	46,5	38,5	3031691	12,0	60	10	2,1	9	340	50	400
46	48,5	40,5	3031704	12,0	60	10	2,1	9	350	100	400
47	50,0	41,4	3031712	12,0	60	10	2,1	9	380	100	400
49	52,0	42,5	3031719	12,0	72	10	2,1	9	410	50	200
50	53,0	43,5	3031720	12,0	72	10	2,1	9	410	100	400
51	54,0	44,0	3031739	12,0	72	10	2,1	9	410	100	400
53	55,8	46,0	3031747	12,0	72	10	2,1	9	410	50	200
55	58,0	46,8	3031755	12,0	72	10	2,1	9	430	100	400

	TECHNICAL INFORMATION	
	MATERIAL	STEEL 51 CrV4
	FINISH	MULTILAYER, CHROME (VI)-FREE BASE COAT: ZINC TOP COAT: ORGANIC BLACK COLOR
	CORROSION RESISTANCE	720 HOURS SALT SPRAY (ASTM B-117)

